



CAVALLI

ES END SUCTION CENTRIFUGAL PUMP

FEATURES

- Pump are designed with high efficiency, non self priming centrifugal pump
- Superiority & high quality of FRPP or PVDF material use in the pump. High precision casting of stainless steel component. The pump is design & manufactured to handle acid and alkali liquid in transfer or recirculation application.
- Optimum temperature handling:
FRPP 75°C
PVDF 90°C
- Unique design shaft seal, built in self cooling Teflon Bellow Seal
- High acid & alkali corrosion resistance material option available FRPP, PVDF, Stainless Steel

ORDERING CODES

ES P - 75 05 2 N C C C Ex K*

Model

Material

- P - GFRPP
- K - PVDF
- 4 - SS304
- 6 - SS316

Inlet Outlet Diameter

- 75 - 75mm
- 100 - 100mm
- 125 - 125mm

Power

- 05 HP
- 07 HP
- 10 HP
- 15 HP
- 20 HP
- 25 HP
- 30 HP
- 40 HP

No. of Poles

- 2 - 2 Poles
- 4 - 4 Poles

Elastomer

- N - NBR
- E - EPDM
- V - VITON
- T - PTFE

Stationary Seal

- C - Ceramic
- S - SIC

Rotating Seal

- C - Carbon
- S - SIC

Spring

- H - Hastelloy-C
- S - SIC

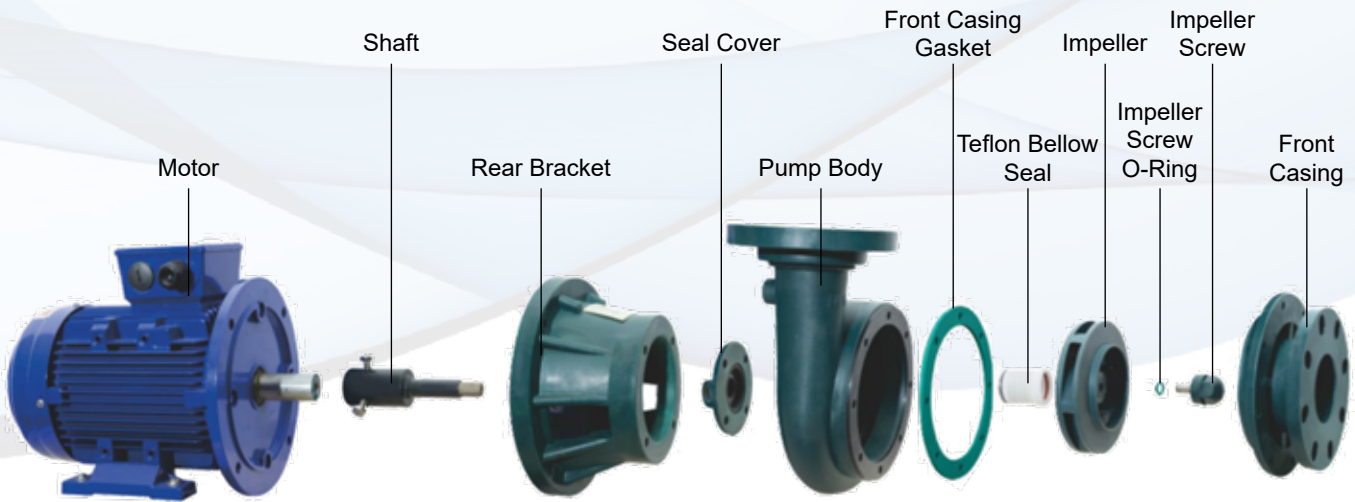
Motor Standard

- Ex - Explosion Proof 400V / 50Hz / 3 phase
- St - Standard Motor 400V / 50Hz / 3 phase

Option

- K - Dry Run Extender*

CENTRIFUGAL PUMP



MODEL														WEIGHT
ES - 75052	Flowrate	m ³ /hr	60	54	48	42	36	29	20	0				39kg
	Head	m	6	8	10	12	14	16	18	19				
ES - 75072	Flowrate	m ³ /hr	82	80	75	69	63	57	49	41	27	0		78kg
	Head	m	8	10	12	14	16	18	20	22	24	25		
ES - 75102	Flowrate	m ³ /hr	114	105	96	86	80	73	65	55	39	15	0	82kg
	Head	m	4	12	15	18	20	22	24	26	28	29	30	
ES - 10015	Flowrate	m ³ /hr	130	122	109	99	87	76	71	60	46	27	0	115kg
	Head	m	4	8	14	18	22	25	26	28	30	32	33	
ES - 125202	Flowrate	m ³ /hr	160	150	140	133	123	102	96	79	67	50	0	141kg
	Head	m	4	10	15	18	20	24	25	28	30	32	34	
ES - 125252	Flowrate	m ³ /hr	170	164	155	149	135	121	113	81	60	45	0	153
	Head	m	8	14	22	26	32	35	36	38	40	42	45	

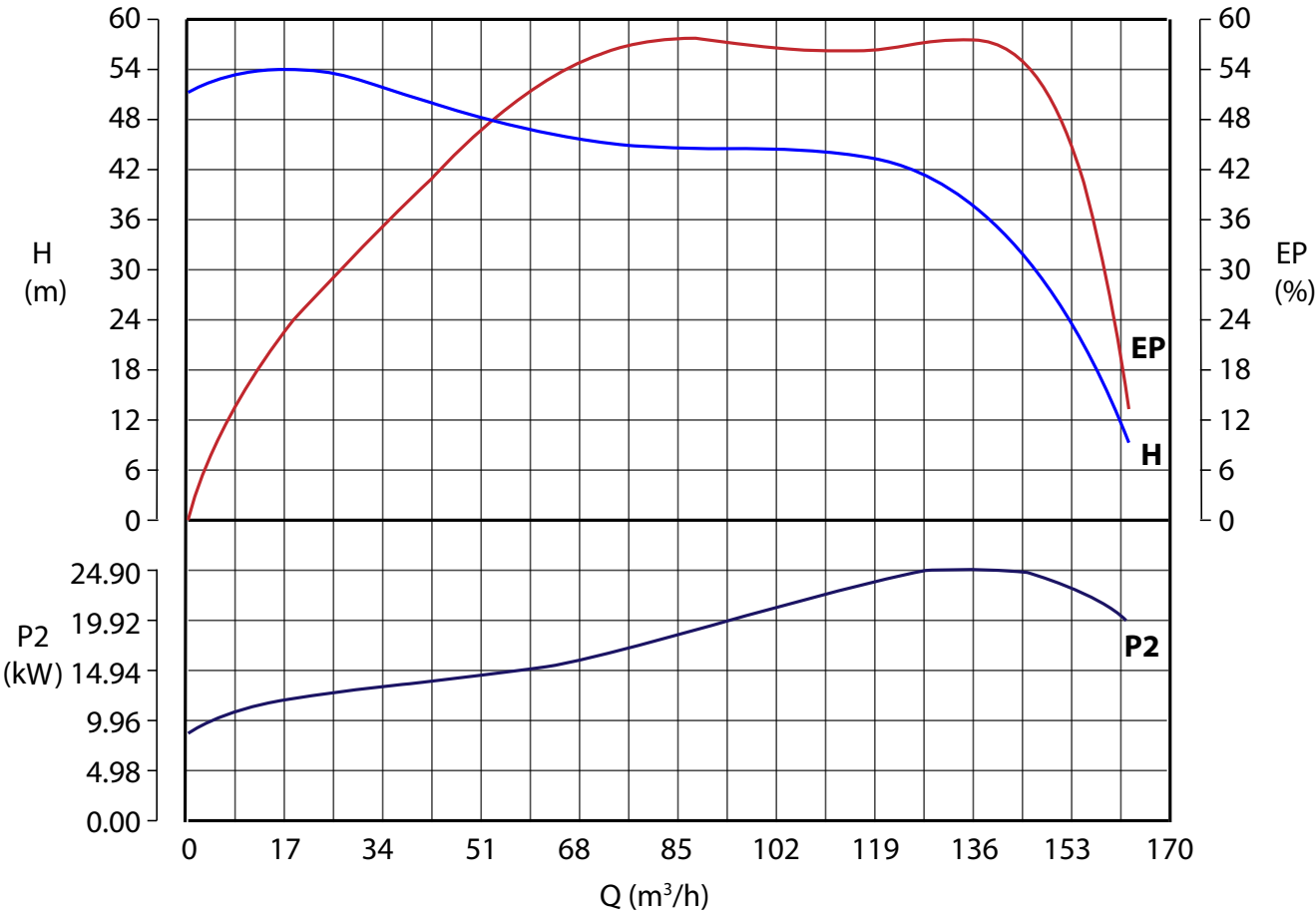
* The dimensions and parts are subject to change without prior notice.

PERFORMANCE CURVE



CAVALLI END SUCTION PUMP ES - 125302VH - SSH - K

50Hz 2900RPM



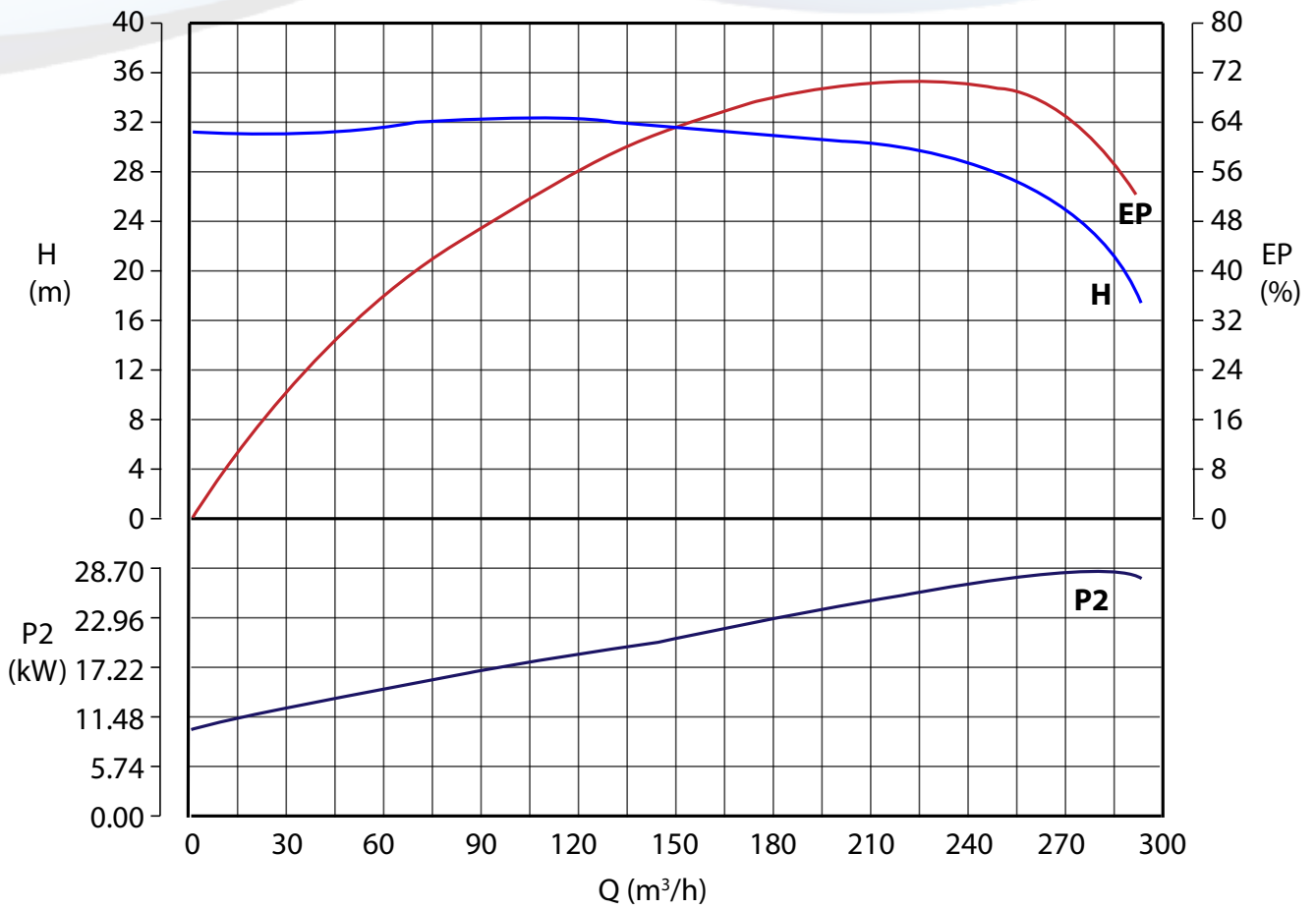
Performance curve is based on water, Specific Gravity of 1, viscosity of 1 cst at ambient temperature

PERFORMANCE CURVE



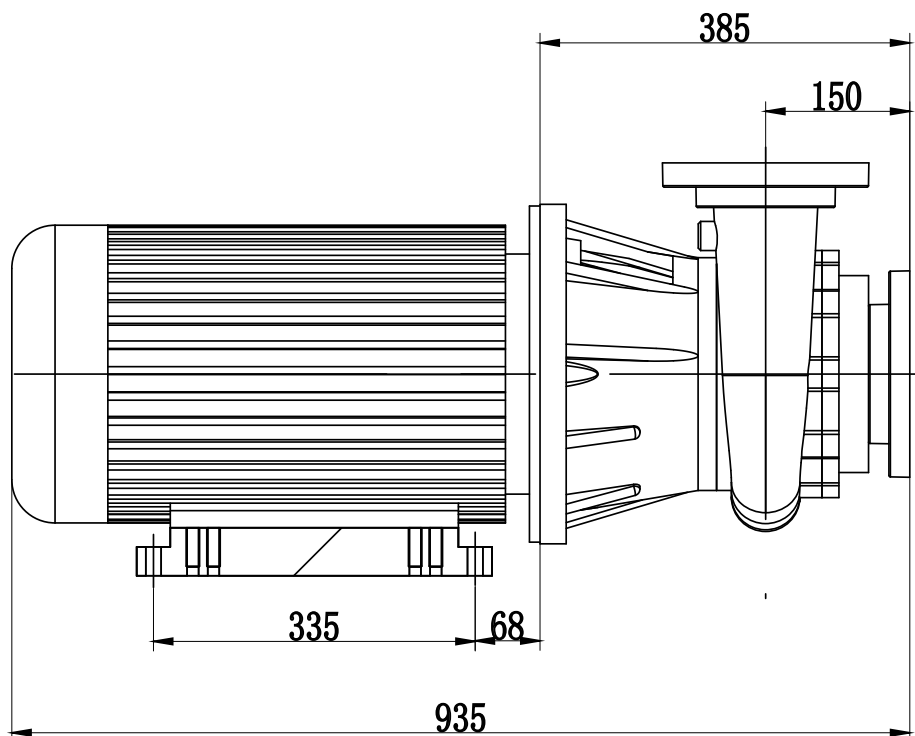
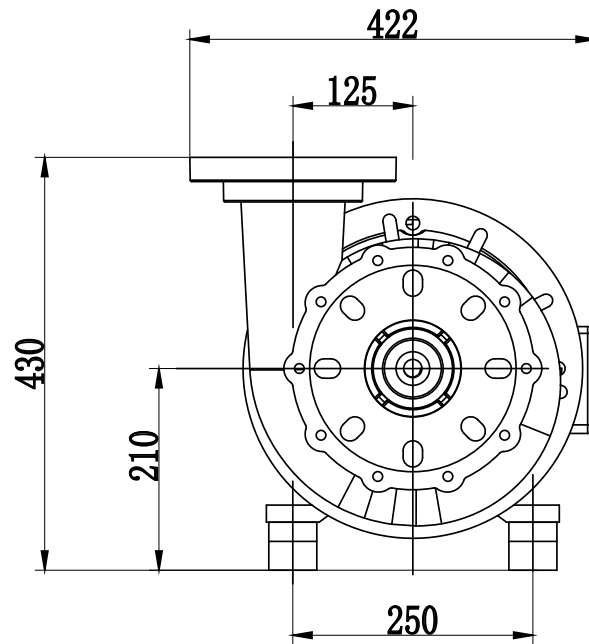
CAVALLI END SUCTION PUMP ES - 125404VH - SSH

50Hz 1450RPM



Performance curve is based on water, Specific Gravity of 1, viscosity of 1 cst at ambient temperature

CAVALLI END SUCTION PUMP
ES - 125302VH - SSH - K



CAVALLI END SUCTION PUMP
ES - 125404VH - SSH

